

H2H3 RUN #509 – Saturday 3rd June 2023

Location: Nong Phlap, Hua Hin District, Prachuap Khiri Khan 76130

Plus Code Location: JP7V+558 Nong Phlap, Hua Hin District, Prachuap Khiri Khan

GPS Coordinates: N 12.612918, E 99.742962

Google Map Link: <https://goo.gl/maps/tURUYsk6U7vTZRb8A?coh=178572&entry=tt>

Hares: African Queen and Hong Ting Tong

Biermeister Team: Jock Twat

Ice Man: Tinks

Tax Collector: African Queen

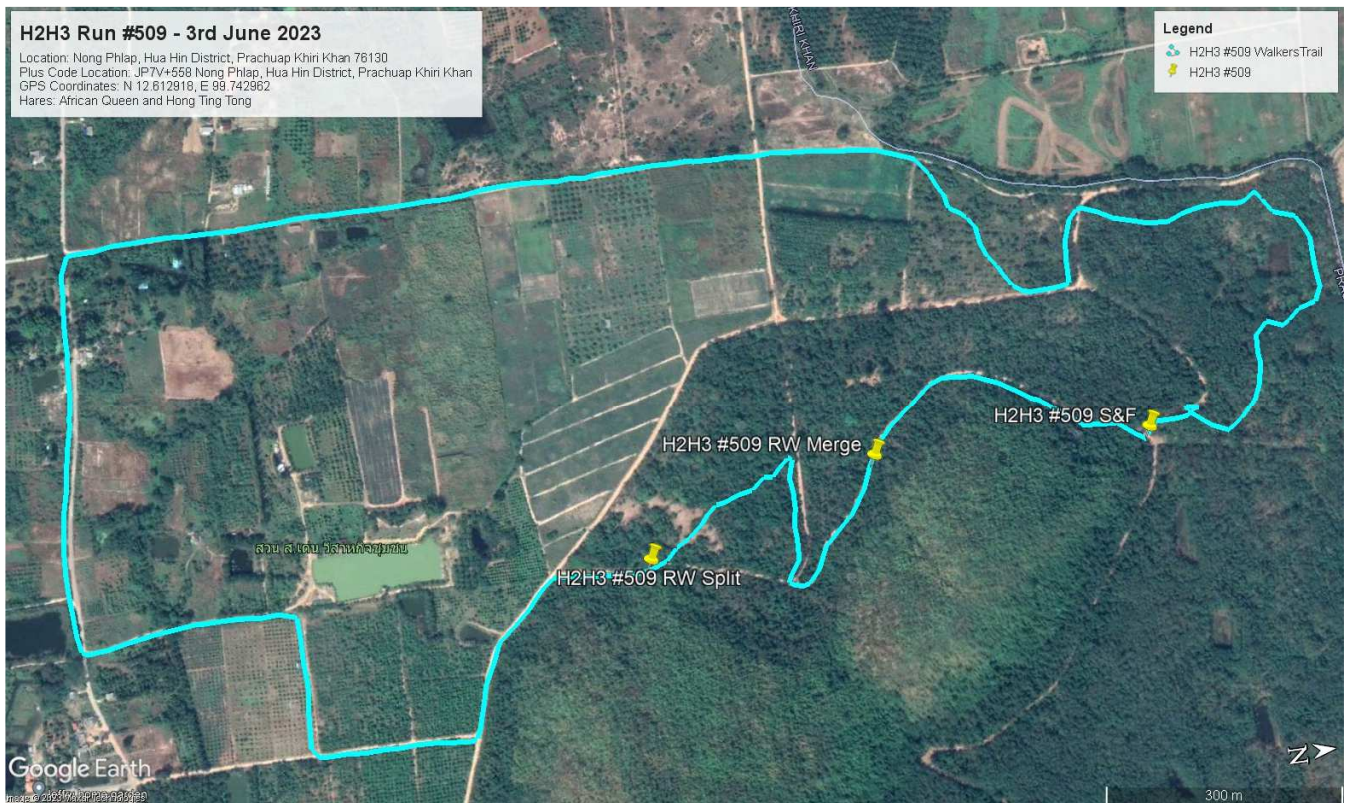
Scribe: Tinks

Number of Hashers: 22

Pre-Hash Circle.

By the time I arrived at the run site several hashers were already waiting and not having had any problems following the website misdirection's. However, Ding-a-Ling arrived in a completely different direction and complaining about no signage on the Pala-U Road and claiming he had no idea where the Dole Factory was. Slime and Lucky Me arrived just prior to the call for the pre-run briefing. Ding-a-Ling called the gathered pack to order, and Hares African Queen and Hong ting Tong briefed the pack. Usual trail markings, paper to the right, false trails, and one Rambo split and merge. With no other hazards to be aware of the pack set out on trail.

Walkers Trail



Within a very short distance from the start the pack was complaining of lost paper this being a result of the FRB's not being very observant and the rest of the pack following like sheep. In fact, the rear enders like me benefited from this and finding the trail heading right into the trees and now at the front of the pack. The trail meandered through the trees before coming out on a gravel track. The trail then headed left before heading back into trees and

arriving back on a well-used dirt road. A check on this section caught out FRB who ended up heading in the wrong direction only to come across a false trail sign. The trail then continued along this gravel road for 1100m before joining a paved road. The trail headed along the road for 500m with Brambles looking for trail to the left in a pineapple field but no luck. The trail continued further along the road before turning left and heading back towards the hill. As we approached 4-5 yappy dogs the trail broke right and headed on a more overgrown path to come out on another gravel road, turning left and onto another gravel road and started contouring round the hill to the right. The trail then turned right and headed in an uphill direction to the Rambo/Walk split where Hong Ting Tong was directing Rambo's to what was to become an extreme hill challenge. The walkers trail continued straight and then deviated left to wander through bushland before coming out on a track and then heading on a gentle uphill gradient to join a more substantial track heading down hill. Suddenly on my right jumping out from the trees came FRB at the merge point. From here on it was a continuation downhill to the start point.



Post Hash Circle and.

Having been the first walker back I found FRB desperately looking for a bottle opener, but I had one in the car, so FRB's thirst was quenched. Mudman was next one home and then followed the rest of the pack. The hill challenge proved to be quite extreme, especially the roped section.

Down Downs

Hares: African Queen and Hong Ting Tong – an excellent walker's trail but a very challenging Rambo trail resulting in torn underwear for some.

Blind Man: Ding-a-Ling complaining no signs at the Dole Factory, there never was one (read the misdirection's).

Leavers: Lucky Me and Slime heading for Scotland.

Christening: Noi Blainey named Little Dragon.

Torn underwear: Lucky Me sliding down the hill and Slime looking for compensation.

Next Hash Full Moon on Thursday: Penny Lane. Restaurant 86, Samor Prong

Next Hash CAH3 on Saturday: Hugs and CC near Palm Hill

On After:

Although it was a no alcohol day several hashers went to 60's Town on the way home.

On On Scribe

Tinks